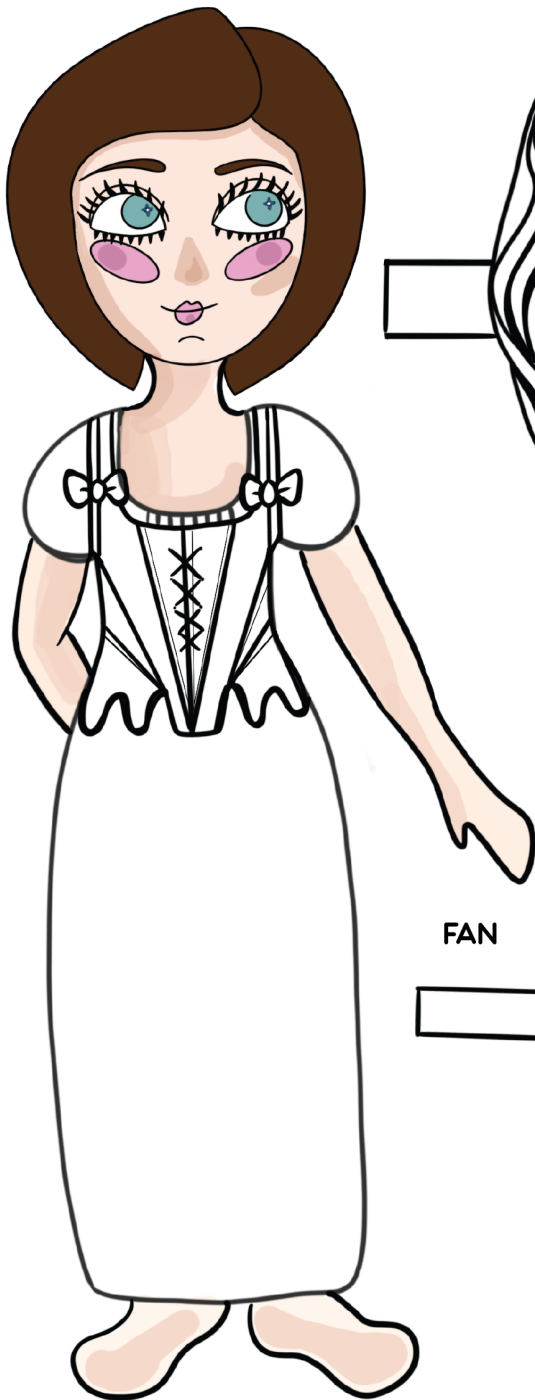
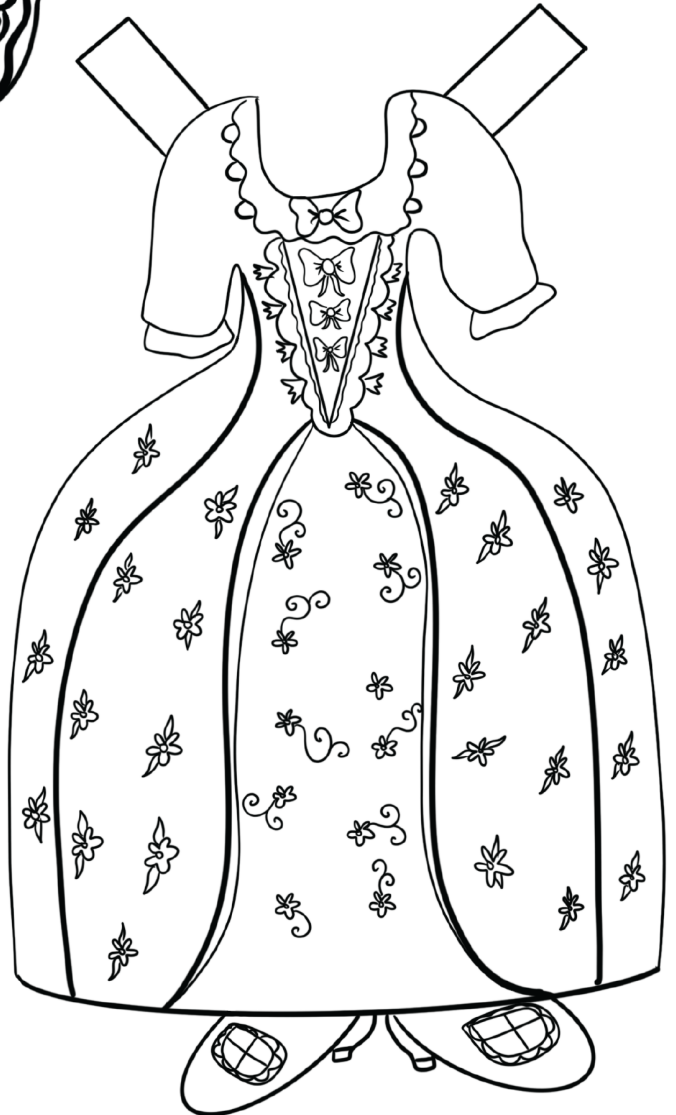


# MATILDA

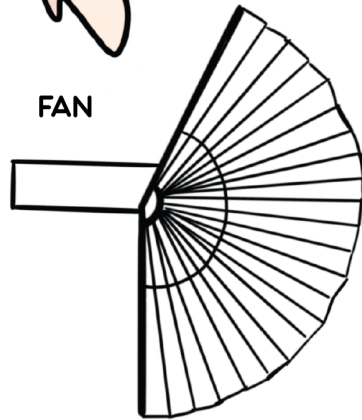
PRINT THIS PAGE AND THEN COLOR, CUT, PASTE, AND DRESS THE PAPER DOLL.



DRESS



FAN



This doll is named after Matilda Lee, who grew up at Stratford Hall and married Revolutionary War hero Henry "Light Horse Harry" Lee. Matilda was known to have ordered many items through her uncle Richard Henry Lee who often took trips to Philadelphia. Her dress would have come in three parts, the gown, the petticoat and the stomacher. Pockets were also worn like bags tied to a woman's undergarments and accessed through a hole in the gown. In the 1770s and 1780s women wore their hair in large upstyles using animal fat, powders and padding to achieve the style. For more information visit:

<http://www.vam.ac.uk/content/articles/i/introduction-to-18th-century-fashion/>