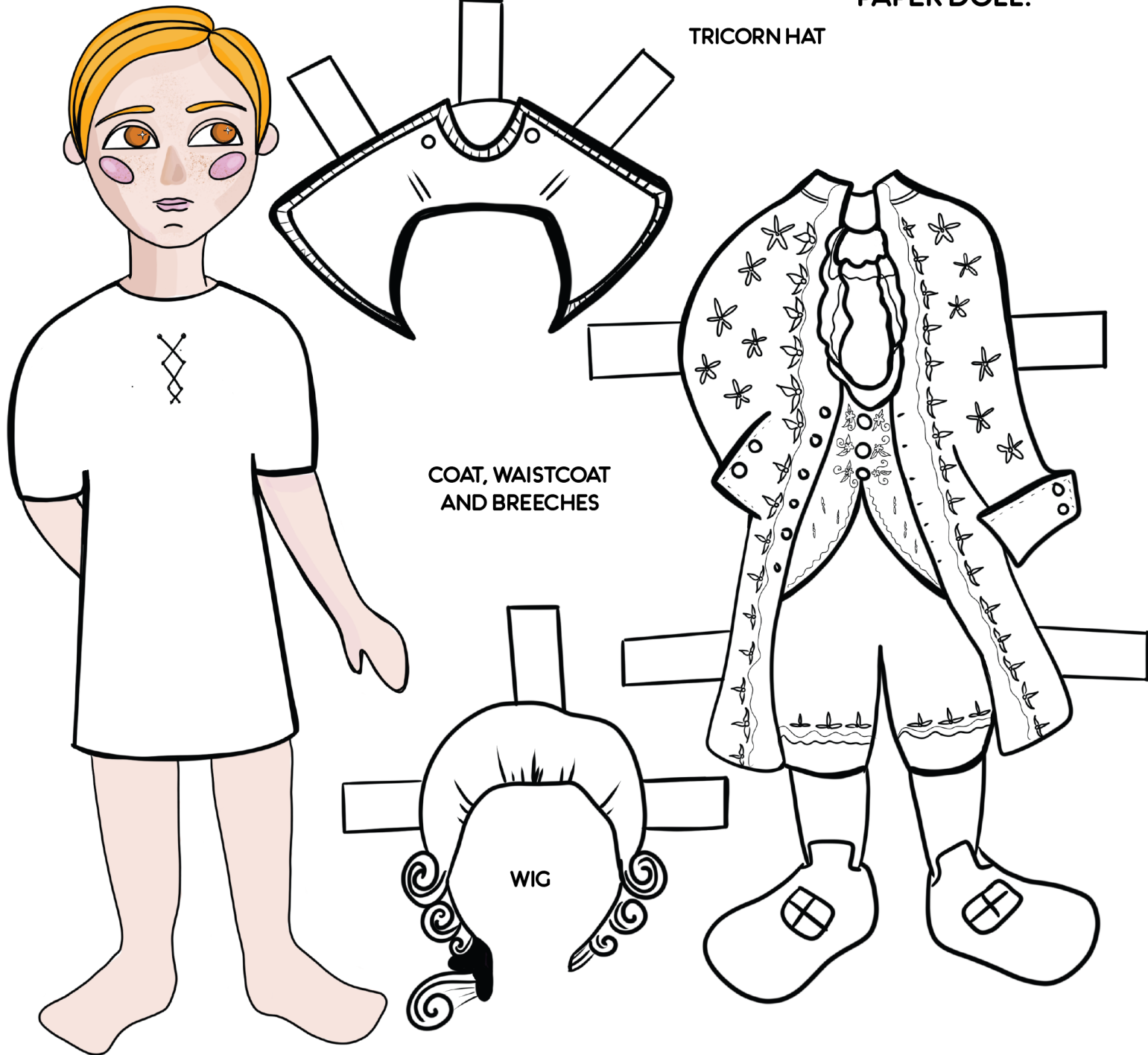


# RICHARD HENRY LEE

PRINT THIS PAGE AND  
THEN COLOR, CUT,  
PASTE, AND DRESS THE  
PAPER DOLL.



This doll is named after Richard Henry Lee, who lived at Stratford Hall as a young boy and was one of the signers of the Declaration of Independence, alongside his brother Francis Lightfoot Lee. Richard Henry Lee's outfit consisted of a coat, a waistcoat, breeches (trousers) and shoes with buckles. The waistcoat was the most decorated part of a man's outfit, and were usually embroidered with different colored threads and sometimes featured sparkly sequins and beading. In the 18th century, men wore wigs often for hygiene purposes but mainly to showcase their social status and their wealth. When making a wig, a wigmaker would sometimes curl hair by wrapping it around clay wig curlers and placing it into bread dough that would then be baked in an oven.

For more men's clothing: <https://artsandculture.google.com/exhibit/men-s-fashion-in-the-18th-century-kyoto-costume-institute/kAISxWiFuyYKw?hl=en>