



STRATFORD HALL FOSSIL WORKSHEET

Have fun learning about paleontology at Stratford Hall! Paleontology is the study of fossilized animals and plants. The animals below lived millions of years ago in the area that is now known as Stratford Hall. Many of them are now extinct, but their relative ancestors are still alive today. At one point, when ocean levels were much higher, the ground that Stratford Hall sits on was completely underwater and filled with aquatic marine animals!

MASTODON

SHORT FACED BEAR

JAGUAR

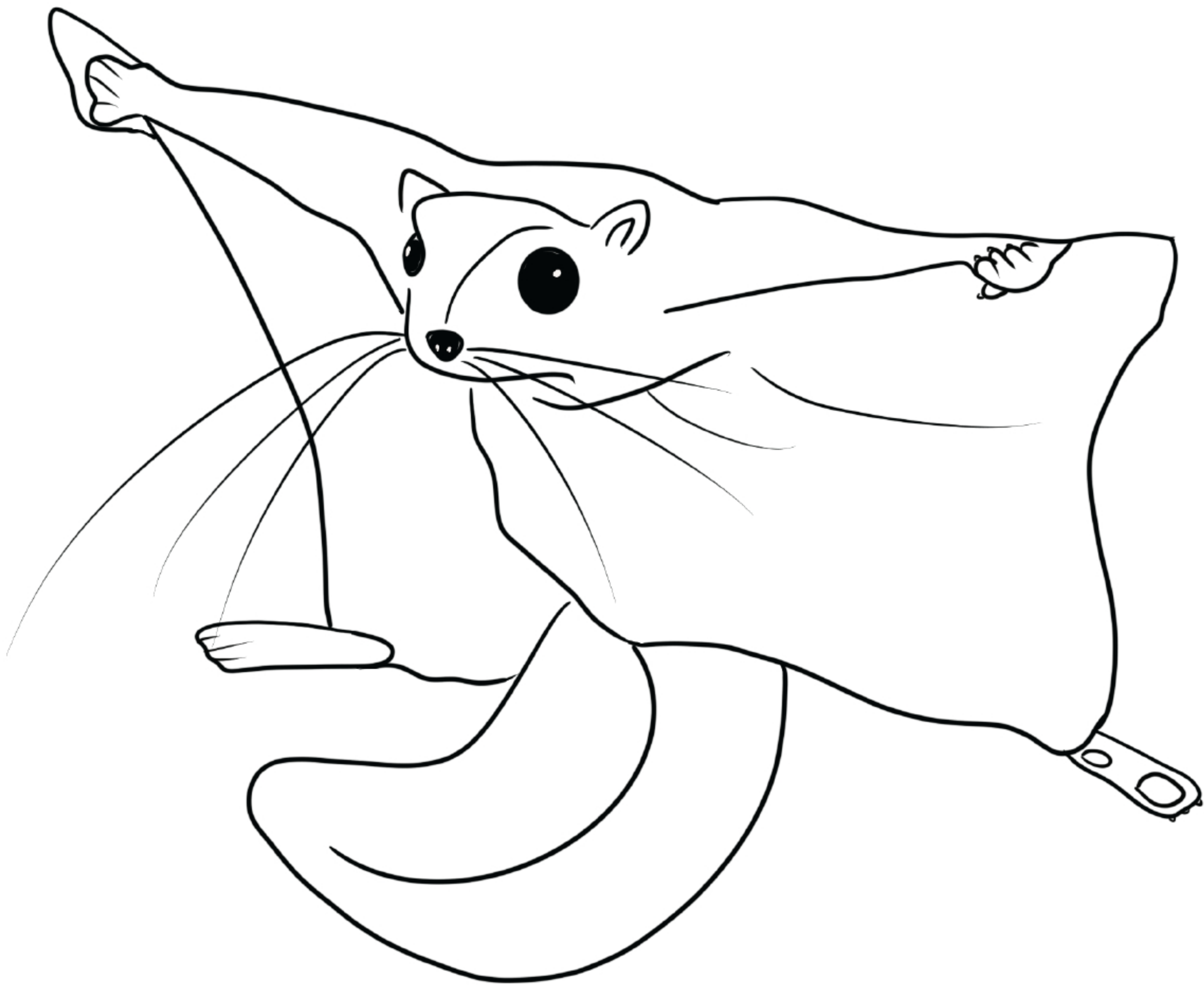
GIANT GROUNDSLOTH

FLYING SQUIRREL

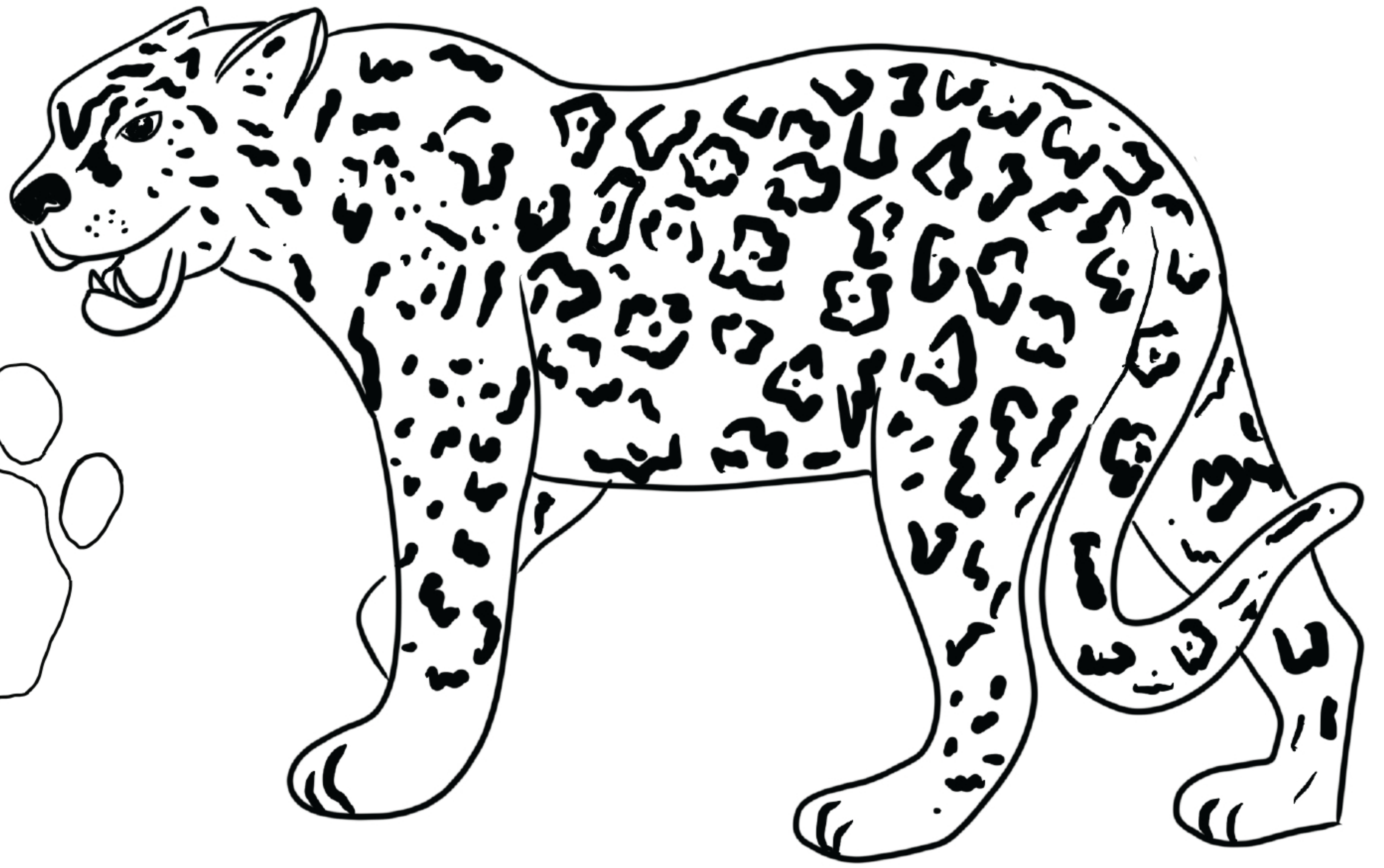
TAPIR

Here are some pictures of fossilized footprints that have been found at Stratford Hall, as well illustrations of the footprint and what the animal would have looked like while it roamed the land. Using the bank of names above, guess the animal and color in the image. Check your answers with the answer-key at the bottom of this instruction page.

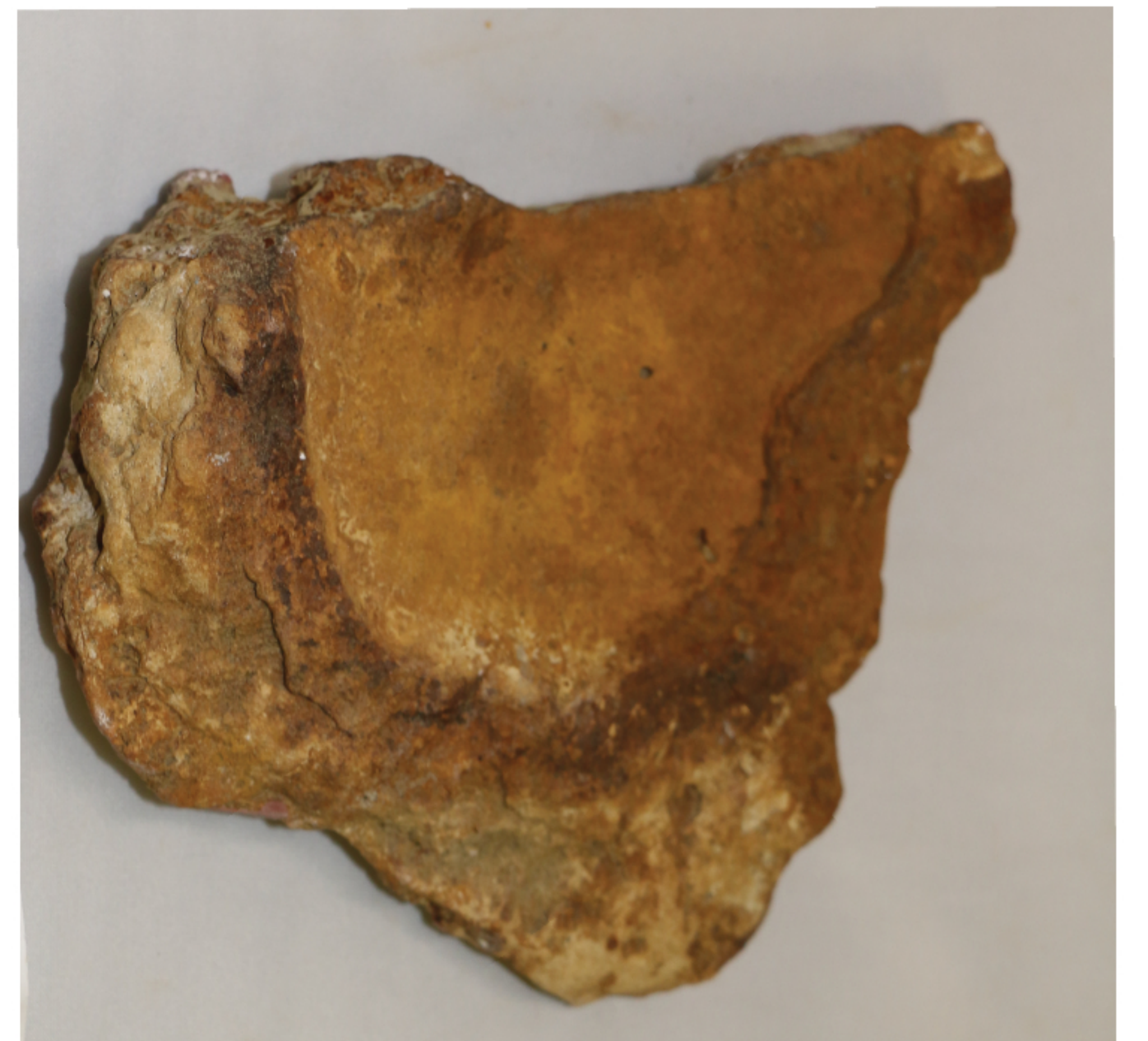
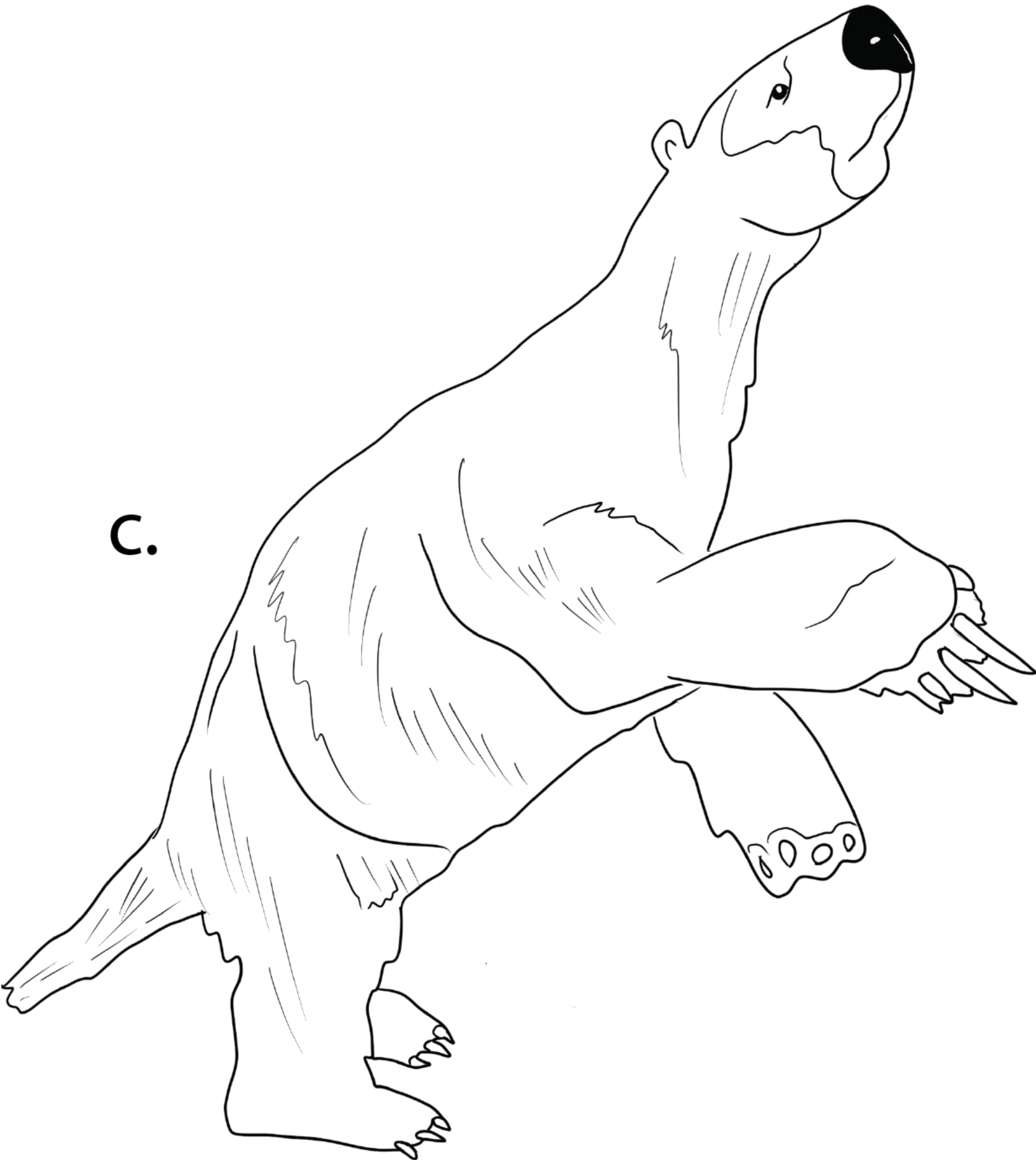
a.



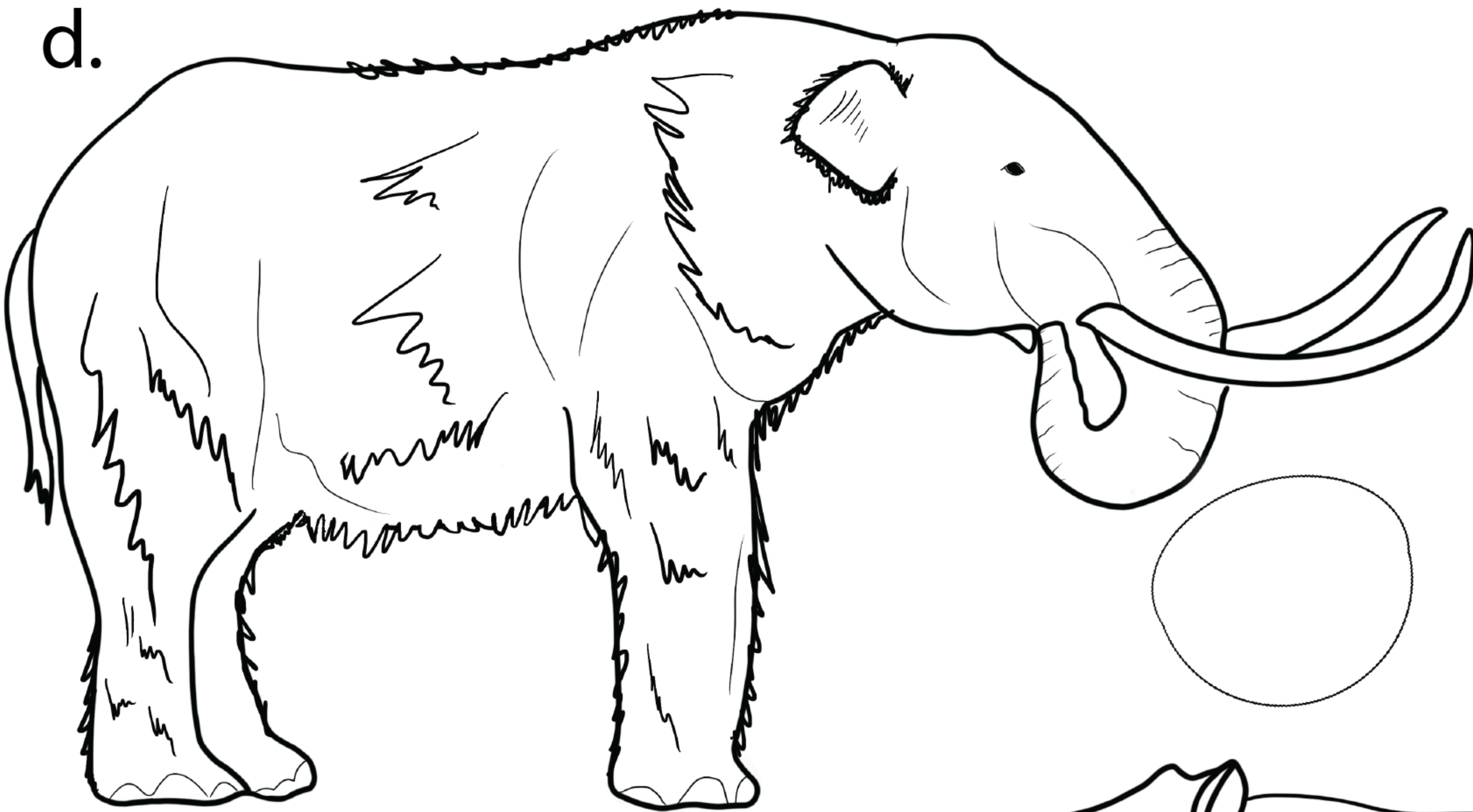
b.



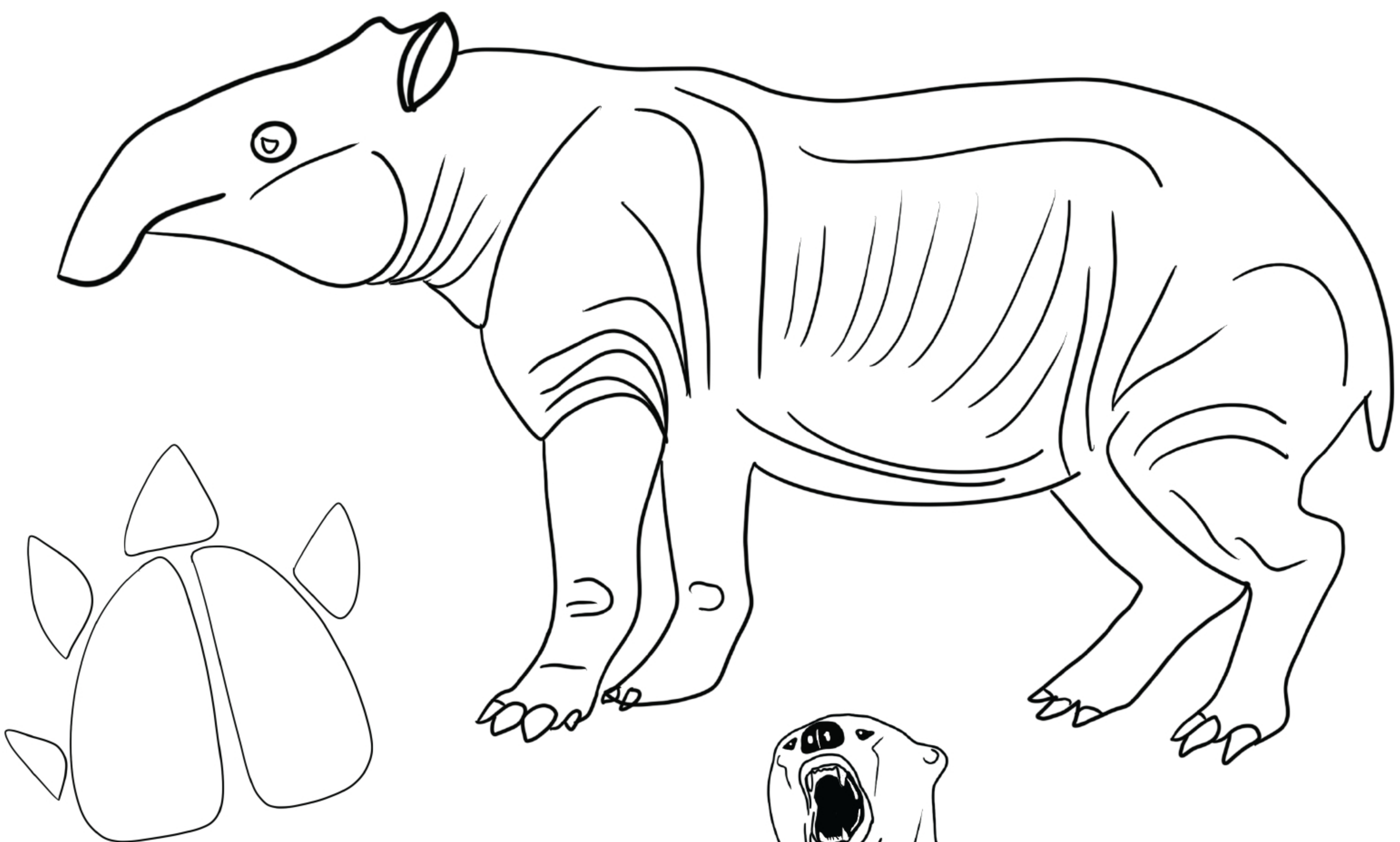
c.



d.



e.



f.

